

# Fluke 424D Laser Distance Meter

**FLUKE**®

## Features

The feature-packed 424D distance meters measures up to any situation.

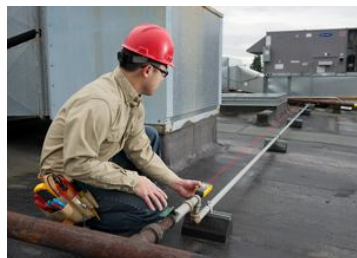
- Measures up to 100 m (330 ft)
- Higher accuracy: +/-1 mm (0.04 in)
- 4-line display shows you even more data at a glance
- Inclination sensor assists with height tracking, leveling, and indirect horizontal distance measurements when line-of-sight is blocked by an obstacle
- Corner angle feature, allows you to determine the angle of a corner
- Compass provides a "heading" for your distance measurements
- Stores 20 complete displays for quick recall
- Backlight
- Tripod mode allows you to mount the meter to a tripod when measuring long distances
- Full Pythagoras function for height measurements
- Audible keypad feedback
- Stake Out feature helps you mark out defined lengths such as when constructing wooden frames
- Automated End-piece Correction for measuring from an edge or corner --a built-in sensor detects the position of this bracket and automatically changes the reference point
- Minimum/Maximum function
- Enhanced environmental protection: IP54-rated as dust and water spray resistant
- Improved battery life of 5000 measurements with auto shut-off feature

Like all the new Fluke Laser Distance Meters, the 424D offers instant, one-button measurements of the distance between two objects with:

- Easy targeting with bright laser
- Quick calculations of area (square feet/meters) and volume
- Easy-to-use addition and subtraction function

All meters offer:

- Reduction of estimation errors, saving both time and money
- The most advanced 2 laser technology for distance measurement
- Instant measurement with one-button operation
- Easy addition and subtraction function
- Quick calculation of area (square footage) and volume
- Easy addition and subtraction of measurements
- Minimum/maximum function
- Improved battery life from automatic shut-off feature
- Pythagoras calculation for determining distance indirectly from two other measurements
- Pouch with Fluke logo
- Three-year warranty



## Specifications

	414D	419D	424D
<b>Distance Measurement</b>			
<b>Typical Measuring Tolerance[1]</b>	± 2.0 mm [3]	± 1.0 mm [3]	
<b>Maximum Measuring Tolerance[2]</b>	± 3.0 mm [3]	± 2.0 mm [3]	
<b>Range at Leica target plate GZM26</b>	50 m / 165 ft	80 m / 260 ft	100 m / 330 ft
<b>Typical Range[1]</b>	40 m / 130 ft	80 m / 260 ft	80 m / 260 ft
<b>Range at unfavorable condition[4]</b>	35 m / 115 ft	60 m / 195 ft	60 m / 195 ft
<b>Smallest unit displayed</b>	1 mm / 1/16 in	6 / 30 / 60 mm (10 / 50 / 100 m)	
<b>Ø laser point at distances</b>	6 / 30 / 60 mm (10 / 50 / 100 m)	6 / 30 / 60 mm (10 / 50 / 100 m)	
<b>Tilt measurement</b>			
<b>Measuring tolerance to laser beam[5]</b>	No	No	± 0.2°
<b>Measuring tolerance to housing[5]</b>	No	No	± 0.2°
<b>Range</b>	No	No	360°
<b>General</b>			
<b>Laser class</b>	2		
<b>Laser type</b>	635 nm, <1 mW		

<b>Protection class</b>	IP40	IP54	
<b>Automatic laser off</b>	After 90 seconds		
<b>Automatic power off</b>	after 180 seconds		
<b>Battery life (2 x AAA) 1.5 V NEDA 24A/IEC LR03</b>	Up to 3,000 measurements	Up to 5,000 measurements	
<b>Size (H X W X L)</b>	116mm Length 53mm Width 33mm Depth	127mm Length 56mm Width 33mm Depth	127mm Length 56mm Width 33mm Depth
<b>Weight (with batteries)</b>	113 g	153 g	158 g
<b>Temperature range: Storage Operation</b>	-25 °C to +70°C (-13 °F to +158 °F)  0 °C to +40 °C (32 °F to +104 °F)	-25 °C to +70°C (-13 °F to +158 °F)  -10 °C to +50 °C (14 °F to +122 °F)	
<b>Calibration cycle</b>	Not applicable	Not applicable	Tilt and compass
<b>Maximum altitude</b>	3000 m	3000 m	3000 m
<b>Maximum relative humidity</b>	85% at 20 °F to 120°F (-7 °C to 50 °C)	85% at 20 °F to 120°F (-7 °C to 50 °C)	85% at 20 °F to 120°F (-7 °C to 50 °C)
<b>Safety</b>	IEC Standard No. 61010-1:2001 EN60825-1:2007 (Class II)		
<b>EMC</b>	EN 55022:2010 EN 61000-4-3:2010 EN 61000-4-8:2010		

[1] Applies for 100 % target reflectivity (white painted wall), low background illumination, 25 °C.

[2] Applies for 10 to 500 % target reflectivity, high background illumination, -10 °C to +50 °C.

[3] Tolerances apply from 0.05 m to 10 m with a confidence level of 95 %. The maximum tolerance may deteriorate to 0.1 mm/m between 10 m to 30 m and to 0.15 mm/m for distances above 30 m.

[4] Applies for 100 % target reflectivity, background illumination between 10'000 lux and 30'000 lux.

[5] After user calibration. Additional angle related deviation of ±0.01° per degree up to ±45° in each quadrant. Applies at room temperature. For the whole operating temperature range the maximum deviation increases by ±0.1°.

<b>Fluke 424D</b>	Laser Distance Meter Includes: <ul style="list-style-type: none"> <li>● 424D Laser Distance Meter</li> <li>● Two AAA batteries</li> <li>● Users manual on CD</li> <li>● Quick reference guide</li> <li>● Vinyl carrying pouch</li> <li>● Lanyard</li> <li>● Three-year warranty</li> </ul>
-------------------	---